








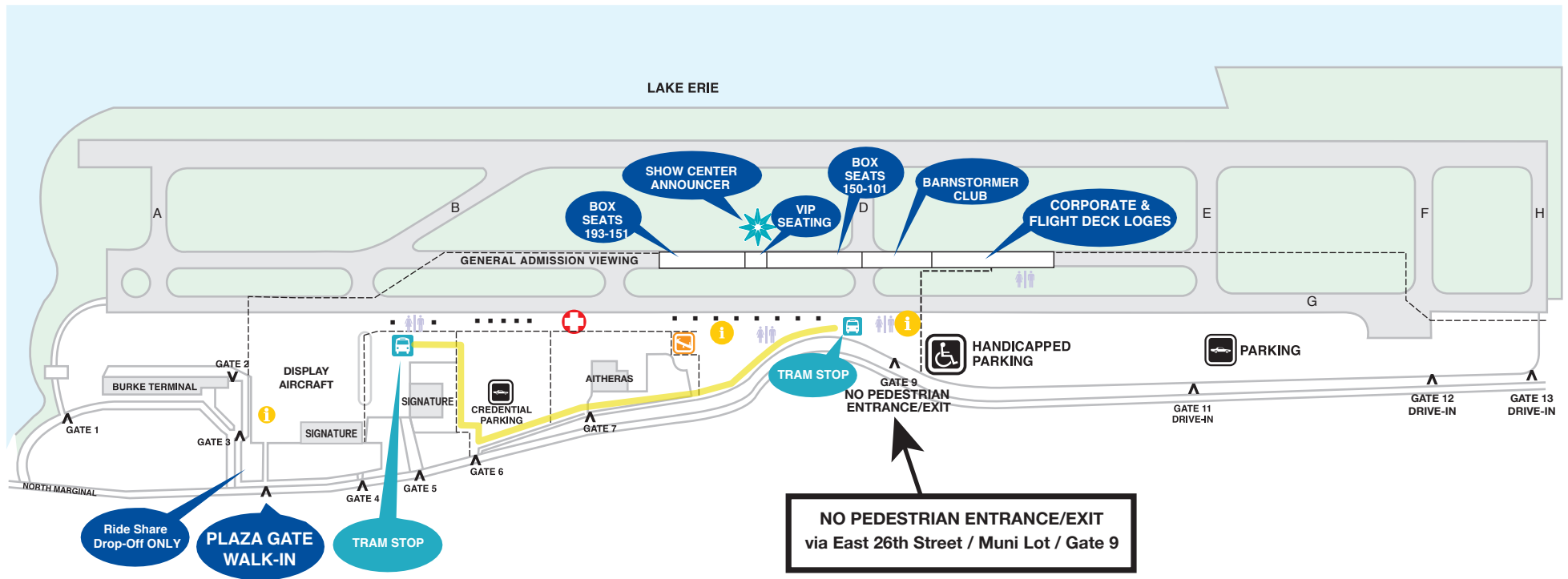


**LEGEND:**

 INFORMATION CENTER / ATM	 FREE TRAM STOP
 KIDDIE KONCOURSE	 TRAM ROUTE
 METRO HEALTH FIRST AID	 TOILETS
 CONCESSIONS	 GATES
	 FENCE



**TRAM:** Jump aboard the FREE tram and save your feet from a ½ mile walk. The tram is available inside the air show grounds. The tram has two stops: (1) close to the large display aircraft and (2) near Gate 9. There is a single tram running and wait times will vary. Due to exit traffic and safety regulations/concerns, the tram runs from 9am to 3pm and does not enter the parking lot. Please plan accordingly.

**NOTE:** In the event you become separated from your party, remember the Cleveland National Air Show escorts all lost patrons to the Kiddie Koncourse.

**RIDE SHARE PICK-UP:** Due to heavy “exit only” traffic, Uber/Lyft pick-ups must take place on Lakeside Avenue, near the Willard Park / Free Stamp.